



MRP-S36 Polyclonal Antibody

Catalog No	YP-Ab-04020
Isotype	IgG
Reactivity	Human;Rat;Mouse;
Applications	WB;IHC;IF;ELISA
Gene Name	MRPS36
Protein Name	28S ribosomal protein S36 mitochondrial
Immunogen	The antiserum was produced against synthesized peptide derived from human MRPS36. AA range:4-53
Specificity	MRP-S36 Polyclonal Antibody detects endogenous levels of MRP-S36 protein.
Formulation	Liquid in PBS containing 50% glycerol, 0.5% BSA and 0.02% sodium azide.
Source	Polyclonal, Rabbit,IgG
Purification	The antibody was affinity-purified from rabbit antiserum by affinity-chromatography using epitope-specific immunogen.
Dilution	WB: 1/500 - 1/2000. IHC: 1/100 - 1/300. ELISA: 1/10000.. IF 1:50-200
Concentration	1 mg/ml
Purity	≥90%
Storage Stability	-20°C/1 year
Synonyms	MRPS36; DC47; 28S ribosomal protein S36; mitochondrial; MRP-S36; S36mt
Observed Band	15kD
Cell Pathway	Mitochondrion .
Tissue Specificity	Dendritic cell,Kidney,Prostate,
Function	subunit:Component of the mitochondrial ribosome small subunit (28S) which comprises a 12S rRNA and about 30 distinct proteins.,
Background	Mammalian mitochondrial ribosomal proteins are encoded by nuclear genes and help in protein synthesis within the mitochondrion. The mitochondrial ribosome (mitoribosome) consists of a small 28S subunit and a large 39S subunit. They have an estimated 75% protein to rRNA composition compared to prokaryotic ribosomes, where this ratio is reversed. Another difference between mammalian mitoribosomes and prokaryotic ribosomes is that the latter contain a 5S rRNA. Among different species, the proteins comprising the mitoribosome differ greatly in sequence, and sometimes in biochemical properties, which prevents easy recognition by sequence homology. This gene encodes a 28S subunit protein. Pseudogenes corresponding to this gene are found on chromosomes 3p, 4q, 8p, 11q, 12q, and 20p. [provided by RefSeq, Jul 2008],



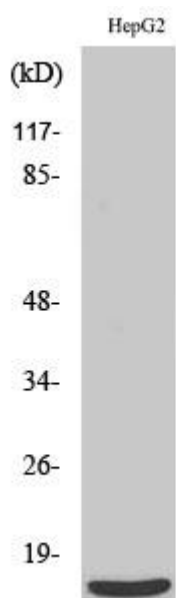
matters needing attention

Avoid repeated freezing and thawing!

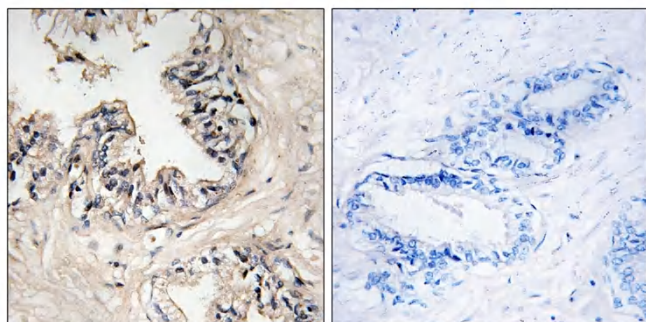
Usage suggestions

This product can be used in immunological reaction related experiments. For more information, please consult technical personnel.

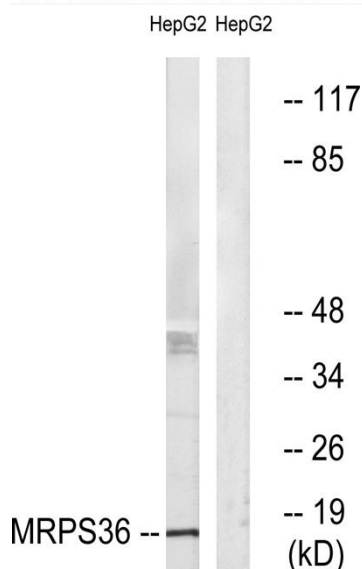
Products Images



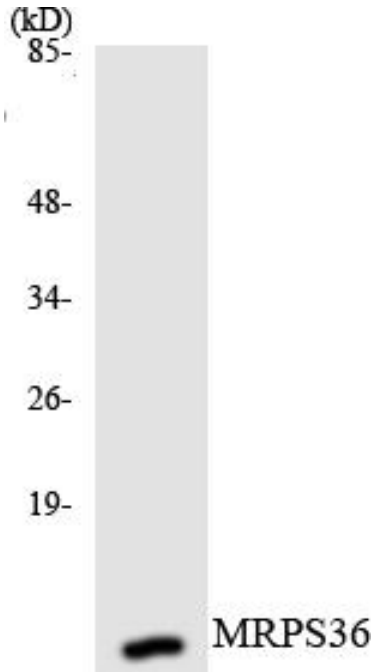
Western Blot analysis of various cells using MRP-S36 Polyclonal Antibody



Immunohistochemistry analysis of paraffin-embedded human prostate carcinoma tissue, using MRPS36 Antibody. The picture on the right is blocked with the synthesized peptide.



Western blot analysis of lysates from HepG2 cells, using MRPS36 Antibody. The lane on the right is blocked with the synthesized peptide.



Western blot analysis of the lysates from K562 cells using MRPS36 antibody.